

Look how far
multi-lumen balloon
brachytherapy
has come.

SENORx



The pioneer—and now the
PROVEN LEADER—in **MLB** technology.

300 sites, over 3,000 cases and rising.

Radiation Oncologists, Medical Physicists and Breast Surgeons agree – the rising star of breast brachytherapy is Contura™ MLB. The promise of Contura is now being clinically confirmed. With its proprietary, multi-lumen dose shaping capability, Contura enables you to optimize dosimetric coverage to the targeted tissue while minimizing radiation to healthy tissue.

Contura's optimal design, proven clinical performance coupled with exceptional physics training programs have made it the first choice in dose shaping technologies. If you haven't done so already, there simply has never been a better time to adopt this advanced technology into your practice.

OPTIMAL design



Multi-lumen dose shaping optimizes treatment coverage

Extensive physics analysis determined that a four offset lumen design (vs. 2 or 3) allows excellent dosimetric coverage independent of the rotational position of the catheter within the breast. What's more, the lumen geometry was chosen to optimize the ability to shape dose without sacrificing radial dose consistency. Ultimately, Contura's unique design enables better treatment coverage of an asymmetric PTV_EVAL while minimizing overall radiation dose to the breast.



Vacuum assist facilitates improved target coverage

When seroma or air become trapped between the balloon surface and breast tissue, treatment can be delayed for days or even discontinued. Contura helps avoid these situations by incorporating built-in vacuum assist ports that enable the physician to aspirate seroma as well as air pockets – and continue treatment on schedule.



Exceptional balloon symmetry

A balloon asymmetry of greater than 2mm for a central lumen only device could result in termination of treatment. Because the Contura balloon is constructed from a polyurethane polymer selected for strength and resiliency, its proprietary design and fabrication enable it to better resist rupture or deflation. Contura's exceptional symmetry provides a consistent, reliable shape which maintains its geometry over the course of treatment.

PROVEN performance



Minimize skin and rib dose

Clinical experience with Contura at leading institutions confirms PTV_EVAL coverage of $V95 \geq 95\%$, while maintaining skin and rib dose of less than 125%. This is rapidly becoming the new standard.



Flexibility to treat more patients

Clinical experience^{6,8} has proven that many patients who would not be candidates for five day brachytherapy treatment with traditional single lumen catheters have been successfully treated with Contura. Treatment planning flexibility provided by the four offset lumens offers a potential alternative for smaller-breasted women or women with difficult lesion locations.



More clinical data on the advantages of MLB

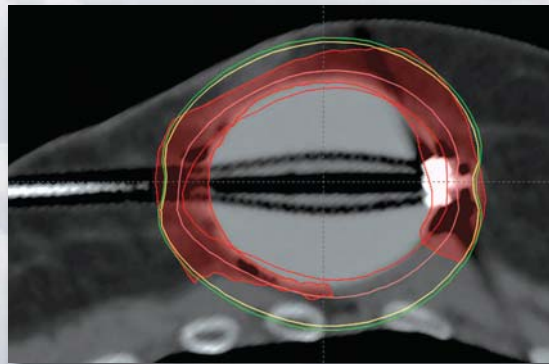
To date, there have been numerous clinical data presentations on the benefits of Contura.

EXCEPTIONAL support



A choice of training programs makes it easy to get started

SenoRx offers several efficient alternatives to get you up to speed on 3D CT-based planning using Contura MLB. Whether you choose online training, webinars or proctoring at your own site, SenoRx has a program to meet your individual learning style.



Even though this patient presented with very tight skin and rib margins, treatment with Contura MLB was successful due to the ability to precisely shape the radiation dose.

Contura MLB is designed to deliver optimal treatment coverage while minimizing excess radiation to surrounding skin and ribs.



Publications/Presentations

1. "Recent Developments in Breast Brachytherapy." Todor, D. Presented at Breast Brachy School, Scottsdale, AZ, February 28–29, 2008.
2. "Pre-clinical Treatment Dosimetric Assessment of Accelerated (APBI) with the SenoRx Balloon Brachytherapy Catheter." Todor, D.; Rivard, M.; Vicini, F.; Arthur, D. Poster Presentation, 32nd Annual Symposium of the American Society of Breast Disease.
3. "A Single Institution Comparative Study of the Potential Dosimetric Advantages of Balloon Brachytherapy Utilizing Multiple Lumens and Multiple Dwells Versus Single Central Lumen/Central Dwell Only for APBI." Brown, S. Presented at ABS, Boston, MA, May 4–6, 2008.
4. "Accelerated Partial Breast Irradiation with the SenoRx Balloon Brachytherapy Catheter: Preclinical Treatment Planning Assessment." Todor, D.; Rivard, J.; Vicini, F.; Arthur, D. Presented at ABS, Boston, MA, May 4–6, 2008.
5. "A Simple Optimization Method for Multi-Lumen Balloon Breast Brachytherapy." Penn, S.; Xue, T. Presented at AAPM, July 27–31, 2008.
6. "Initial Dosimetric Experience with the Contura™ Multi-Lumen Radiation Balloon Applicator." Kim, L.; Sebastiean, E.; Ghilezan, M.; Vicini, F. Presented at ASTRO, September 21–25, 2008.
7. "A Contura™ Catheter Provides Dosimetric Advantage Over a MammoSite™ Catheter for Accelerated Partial Breast Irradiation." Wilder, R.; Mesa, A.; Chittenden, L.; Curcio, L.; Khanijou, R.; Eisner, M.; Ravera, J.; Tokita, K. Presented at SABCS, December 10–14, 2008.
8. "Initial Radiation Experience Evaluating Early Tolerance and Toxicities in Patients Undergoing Accelerated Partial Breast Irradiation Using the Contura™ Multi-Lumen Balloon (MLB) Breast Brachytherapy Catheter." Brown, S.; McLaughlin, M.; Pope, K.; Haile, K.; Whitaker, T.; Hughes, L.; Israel, P. Presented at SABCS, December 10–14, 2008. Accepted for publication in *Brachytherapy*.
9. "Clinical Improvements in Accelerated Partial Breast Irradiation Using the Contura™ Balloon Applicator." Trombetta, M; et al. Accepted for presentation at ACRO, February 26–28, 2009.
10. "A Contura Multi-Lumen Catheter Offers Important Dosimetric Advantages Over a MammoSite Single-Lumen Catheter That Increase the Applicability of Accelerated Partial Breast Irradiation." Curcio, L.; et al. Accepted for presentation at the 26th Annual Miami Breast Cancer Conference, Miami, FL, March 4–7, 2009.
11. "Initial Surgical Experience Evaluating Early Tolerance and Toxicities in Patients Undergoing Accelerated Partial Breast Irradiation Using the Contura™ Multi-Lumen Balloon (MLB) Breast Brachytherapy Catheter." Israel, P.; Robbins, A.; Shroff, P.; Haile, K.; Pope, K. Accepted for presentation at SSO, March 5–9, 2009. Accepted for publication in *The American Surgeon*.
12. "Preliminary Single Institutional Clinical Experiences with the Contura™ Multi-Lumen Brachytherapy (MLB) Applicator." Golesorkhi, N.; Kim, Y.; Trombetta, M.G.; Werts, E.D.; Julian, T.B. Accepted for presentation at SSO, March 5–9, 2009.
13. "Use of a Contura Catheter for Accelerated Partial Breast Irradiation in 'Intermediate-Risk' Breast Cancer Patients." Mesa, A.V.; et al. Accepted for oral presentation at ARS, April 25–29, 2009.
14. "Initial Dosimetric Experience: Contura Multi-lumen Balloon (MLB) Registry Trial." Arthur, D.W.; Vicini, F.A.; Todor, D.; Julian, T.B. Accepted for oral presentation at ABS, May 31–June 2, 2009.
15. "A Comparison of Skin and Chest Wall Dose Delivered with Multi-Catheter, Contura Multi-Lumen Balloon (MLB), and MammoSite (MS) Breast Brachytherapy." Cuttino, L.W.; Todor, D.T.; Heffernan, J.; Vera, R.; Arthur, D.W. Accepted for oral presentation at ABS, May 31–June 2, 2009.

To learn how you can put the benefits of Contura MLB to work for your APBI patients, call or email SenoRx Customer Service.



INNOVATIVE BREAST CARE AT EVERY STEP

SenoRx, Inc.
3 Morgan
Irvine, CA 92618-1917
877-210-1300
949-362-3519 Fax
customerservice@senorx.com
www.senorx.com

Rx Only
Please consult product Directions For Use for indications, contraindications, warnings, and precautions.

Contura is a trademark of SenoRx, Inc.

©Copyright 2009 SenoRx® Inc. All rights reserved.